

Anti-Mouse IgG (H&L) (Rhodamine Conjugated) Secondary Antibody
Goat Polyclonal, Rhodamine (TRITC)
Catalog # ASR1009**Specification****Anti-Mouse IgG (H&L) (Rhodamine Conjugated) Secondary Antibody - Product Information**

Description	Anti-MOUSE IgG (H&L) (GOAT) Antibody Rhodamine Conjugated
Host	Goat
Conjugate	Rhodamine (TRITC)
FP Value	3.8 moles Rhodamine (TRITC) per mole of IgG
Target Species	Mouse
Reactivity	Mouse
Clonality	Polyclonal
Application	IF, FC
Application Note	FLISA 1:10,000-1:50,000;IF Microscopy 1:1,000-1:5,000;FlowCytometry 1:500-1:2,500
Physical State	Lyophilized
Host Isotype	IgG
Target Isotype	IgG (H&L)
Buffer	0.02 M Potassium Phosphate, 0.15 M Sodium Chloride, pH 7.2
Immunogen	Mouse IgG whole molecule
Reconstitution Volume	500 µL
Reconstitution Buffer	Restore with deionized water (or equivalent)
Stabilizer	10 mg/mL Bovine Serum Albumin (BSA) - Immunoglobulin and Protease free
Preservative	0.1% (w/v) Sodium Azide

Anti-Mouse IgG (H&L) (Rhodamine Conjugated) Secondary Antibody - Additional Information**Shipping Condition**

Ambient

Purity

This product was prepared from monospecific antiserum by immunoaffinity chromatography using Mouse IgG coupled to agarose beads. Assay by immunoelectrophoresis resulted in a single precipitin arc against anti-Goat Serum, Mouse IgG and Mouse Serum.

Storage Condition

Store vial at 4° C prior to restoration. For extended storage aliquot contents and freeze at -20° C or below. Avoid cycles of freezing and thawing. Centrifuge product if not completely clear after standing at room temperature. This product is stable for several weeks at 4° C as an undiluted liquid. Dilute only prior to immediate use.

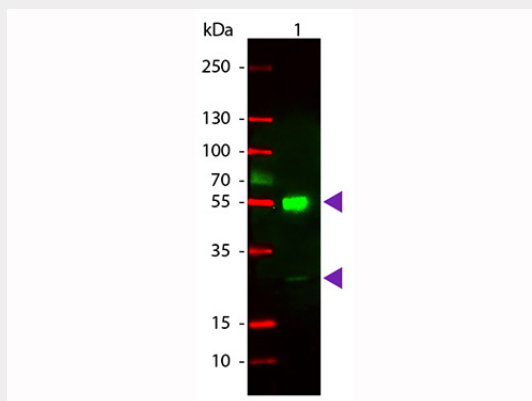
Precautions Note

This product is for research use only and is not intended for therapeutic or diagnostic applications.

Anti-Mouse IgG (H&L) (Rhodamine Conjugated) Secondary Antibody - Protein Information**Anti-Mouse IgG (H&L) (Rhodamine Conjugated) Secondary Antibody - Protocols**

Provided below are standard protocols that you may find useful for product applications.

- [Western Blot](#)
- [Blocking Peptides](#)
- [Dot Blot](#)
- [Immunohistochemistry](#)
- [Immunofluorescence](#)
- [Immunoprecipitation](#)
- [Flow Cytometry](#)
- [Cell Culture](#)

Anti-Mouse IgG (H&L) (Rhodamine Conjugated) Secondary Antibody - Images

Western Blot of Rhodamine Conjugated Goat anti-Mouse IgG Secondary Antibody. Lane 1: Mouse IgG. Lane 2: none. Load: 50 ng per lane. Primary antibody: none. Secondary antibody: Rhodamine goat secondary antibody at 1:1,000 for 60 min at RT. Block: MB-070 for 30 min at RT. Predicted/Observed size: 25 & 55 kDa, 25 & 55 kDa for Goat IgG. Other band(s): none.



Dot Blot of Rhodamine Conjugated Goat-a-Mouse IgG. Antigen: Mouse IgG. Load: Lane 1 - 50ng
Lane 2 - 16.67ng Lane 3 - 5.56ng Lane 4 - 1.85ng Lane 5 - 0.62ng Primary antibody: none
Secondary antibody: Rhodamine Conjugated Goat-a-Mouse IgG secondary antibody at 1:1,000 for
60 min at RT. Block: MB-070 for 60 min at RT.